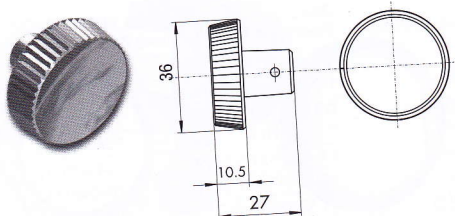


OBLIKE IN DIMENZIJE GUMBOV

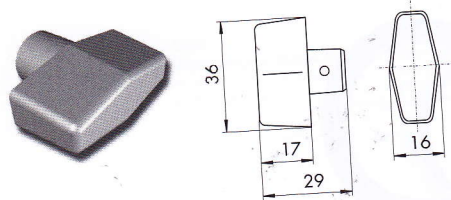
FORMS AND DIMENSIONS OF KNOBS

FORMEN UND MASSEN DER KNÖPFE

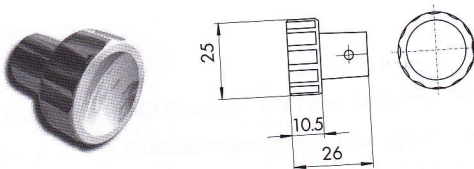
A



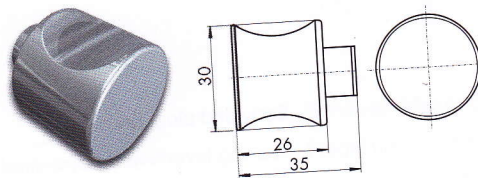
B



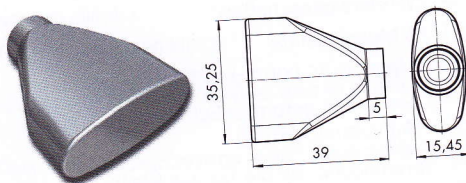
C



D



E



F*



poliran mesing	Polished brass	Messing poliert	ACC/POMOLINO/PC/F
bronzan mesing	Bronzed brass	Messing bronziert	ACC/POMOLINO/PC/FOG
kromirano	Chromium	verchromt	ACC/POMOLINO/PC/FCL
mat kromirano	Satinized chromium	verchromt matt	ACC/POMOLINO/PC/FCS
mat mesing - brass	Satinized	Messing matt	ACC/POMOLINO/PC/FOS

Rozeta za gumb*

Cover plate for knob*
Rosette für Knopf*



poliran mesing	Polished brass	Messing poliert	ACC/MOSTRINA/I/OPSV
bronzan mesing	Bronzed brass	Messing bronziert	ACC/MOSTRINA/I/OGPSV
kromirano	Chromium	verchromt	ACC/MOSTRINA/I/CPSV
mat kromirano	Satinized chromium	verchromt matt	ACC/MOSTRINA/I/CSPSV
mat mesing - brass	Satinized	Messing matt	ACC/MOSTRINA/I/OSPSV

*Za profilni cilindar s podajškom za gumb (str. 75)

*For profile cylinder with extension for the knob (page 75)

*Für profilzylinder mit Verlängerung für Knopf (Seite 75)